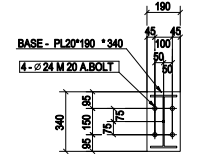
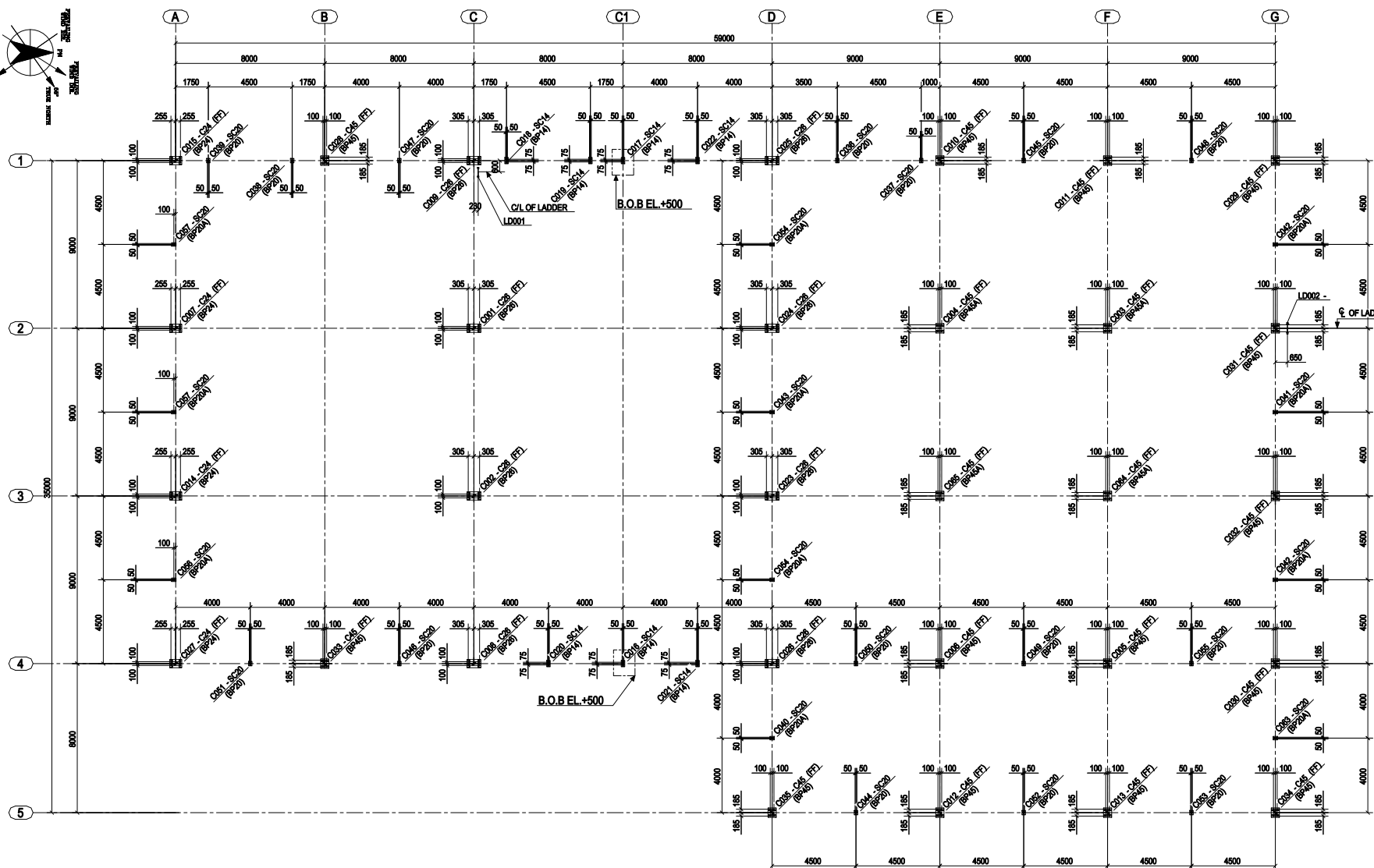
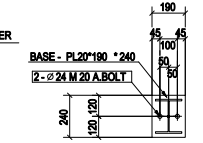


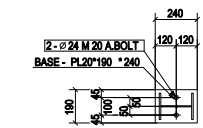
MEMBER LIST		
MARK	SIZE	MAT'L
CN	H80*200*10*8	ASTM A36
C2	H80*200*11*8	ASTM A36
C6	H200*200*11*8	ASTM A36
SC4	H300*150*10*7	ASTM A36
SC20	H100*150*10*7	ASTM A36



BP14
(SC14)
(7 PLACES)



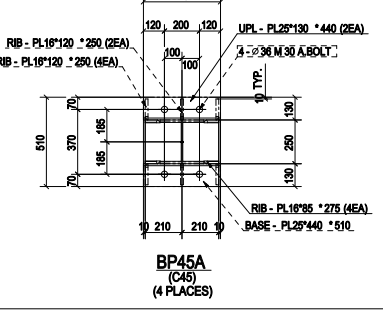
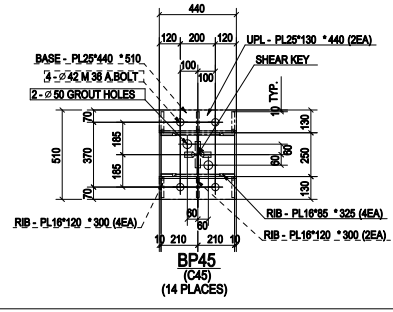
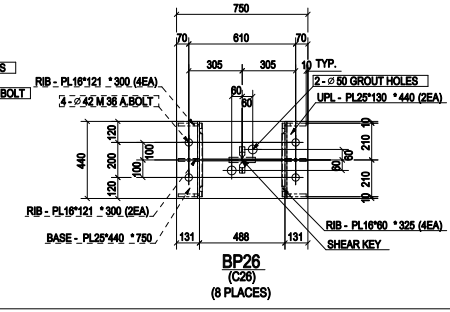
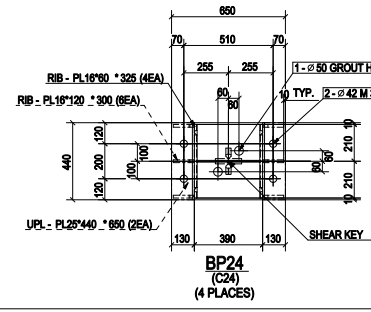
BP20
(SC20)
(15 PLACES)



BP20A
(SC20)
(11 PLACES)

- SHOP NOTES**
1. ALL DIMENSIONS ARE IN MILLIMETERS
 2. ϕ DENOTES ASSEMBLY MARK LOCATION
 3. \nearrow DENOTES DIRECTION OF ASSEMBLY ERECTION
 4. MARK SYSTEM: C08 - C25
 BASIC MARK
 ASSEMBLY MARK
 5. FIREPROOFING
 (FE) INDICATED MEMBERS COMPLETELY ENCASED
 (PF) INDICATED MEMBERS PARTIALLY ENCASED
 (ONLY TOP FLANGE EXPOSED)

COLUMN ARRANGEMENT PLAN
 (B.O.B EL.+500 FOR C24, C26 & C45)
 (B.O.B EL.+225 FOR SC14 & SC20) (U.N.O)



REV.	DATE	DESCRIPTION	M.D.LEE	J.S.KIM	L.S.JANG
0	30 JAN'15	ISSUE FOR CONSTRUCTION			

CHILE KELAR PROJECT

bhpbill

KELAR S.A.

SAMSUNG ENGINEERING CO., LTD.
SAMSUNG ENGINEERING JOB NO. 92715

WATER TREATMENT & WORK SHOP
COLUMN ARRANGEMENT PLAN

DWG. No.	SE - WTS - 001	REVISION	0
----------	----------------	----------	---