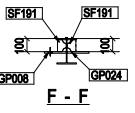
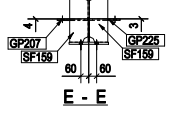
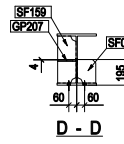
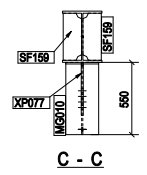
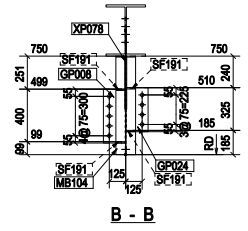
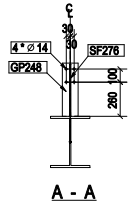
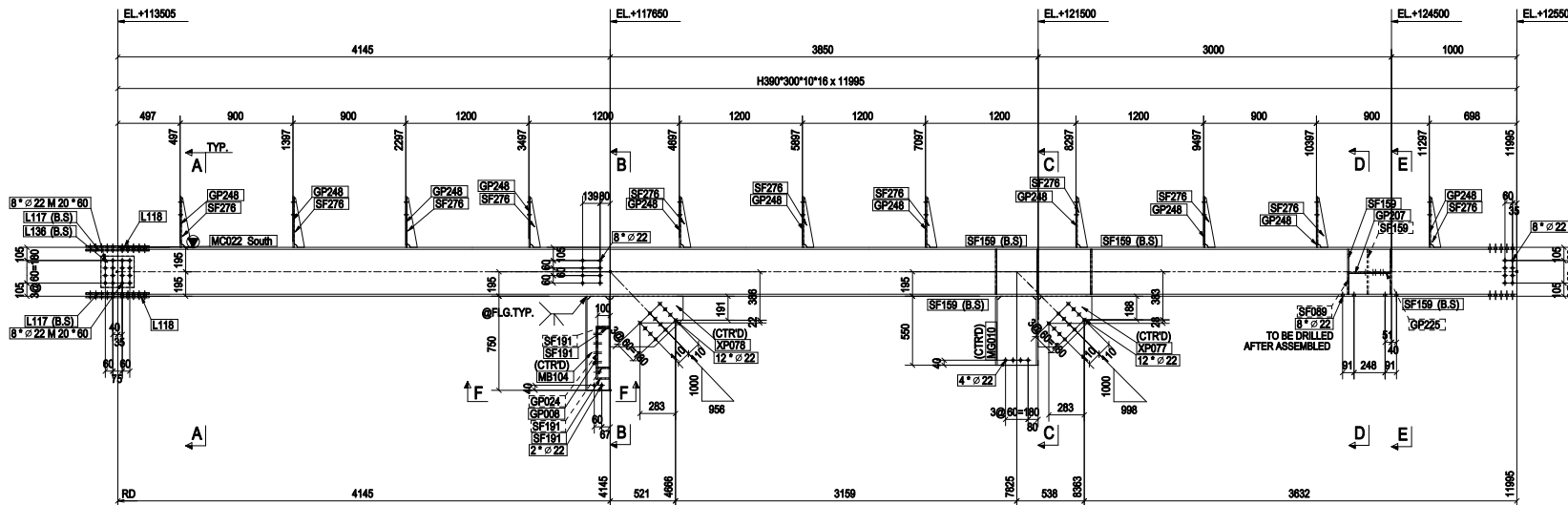
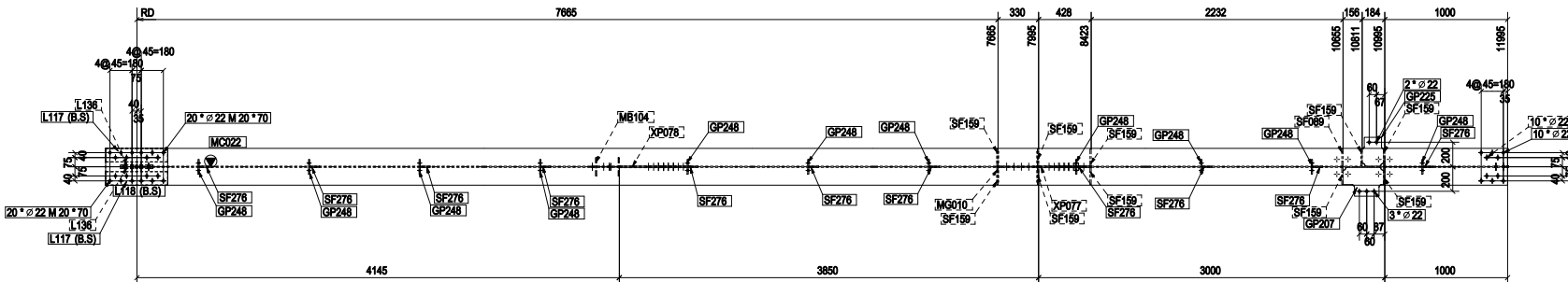


GRID LOCATION & HOLD LIST

C026	J40	EL +123.900	1 EA
------	-----	-------------	------





BILL OF MATERIALS LIST

MARK	QTY	DESCRIPTION	MATL	LENGTH	AREA (sq)	WEIGHT (kg)
1	COLUMN	SIL0-STR	C026			
MC022	1	H380*300*10*16	A892	11965	23.03	1259.49
GP008	1	PL12*167	A36	410	0.15	6.45
GP024	1	PL12*167	A36	335	0.12	5.27
GP207	1	PL10*235	A36	330	0.14	5.06
GP225	1	PL10*235	A36	174	0.08	2.90
GP248	11	PL10*120	A36	405	1.18	41.37
L117	4	PL12*110	A36	505	0.50	20.83
L118	2	PL12*100	A36	505	0.64	28.54
L136	2	PL10*250	A36	285	0.28	10.40
MB104	1	H104*150*9*9	A892	750	0.71	22.43
MC010	1	H540*250*9*14	A892	550	0.90	42.85
SF089	1	PL10*140	A36	179	0.05	1.94
SF159	10	PL10*140	A36	358	1.05	37.37
SF191	4	PL10*97	A36	91	0.05	1.47
SF276	11	PL10*90	A36	385	0.48	15.23
XP077	1	PL15*404	A36	428	0.32	17.29
XP078	1	PL15*403	A36	582	0.44	24.53
G. TOTAL					30.15	1544.12
BOLT LIST FOR ASSEMBLY:				C026	QTY:	1
DIA.	FIELD BOLT	GRADE	LENGTH	QTY	CONN. ASS.	MARK
M 20	HSB	A325M	60	8		
M 20	HSB	A325M	70	20		
M 20	HSB	A325M	60	6		C025
M 20	HSB	A325M	70	20		C025
TOTAL					56	

SHOP NOTES

1. ALL DIMENSIONS ARE IN MILLIMETERS
2. ALL OPEN HOLES : D22 mm DIA HOLE FOR M20 HSB (UNO)
3. WELDING ELECTRODE : AWS D1.1 E70xx OR EQUIVALENT
4. FILLET WELD SIZE : SEE TABLE
- 4-1. UNLESS NOTED OTHERWISE ON SHOP DRAWINGS, ALL WELDS SHALL BE FILLET WELDING.
5. ALL LOOSE PIECE : WIRE TO SHIP.
6. PAINT : SEE SPEC.
7. @ DENOTES ASSEMBLY MARK LOCATION.

0	04MAY18	ISSUED FOR CONSTRUCTION					
REV.	DATE	DESCRIPTION	DRN	CHK	APP	PM	
OWNER :	 State Oil Company of Azerbaijan Republic						
CONTRACTOR :	 SAMSUNG ENGINEERING CO., LTD. SEOUL, KOREA						
PROJECT TITLE:	SOCAR Ammonia and Urea Complex Project						
JOB NO.:	SC-2637	TITLE:	BOAGGED UREA WAREHOUSE SILO & OFFICE AREA COLUMN DETAIL				
SCALE:		DRAWING NO.:	SD - SILO-STR - C026	SHEET NO.:	1/1	REVISION:	0

1 - COLUMN - SILO-STR - C026

*BASIC MARK : C24